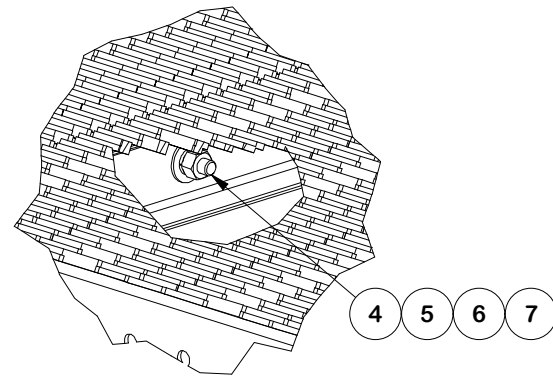
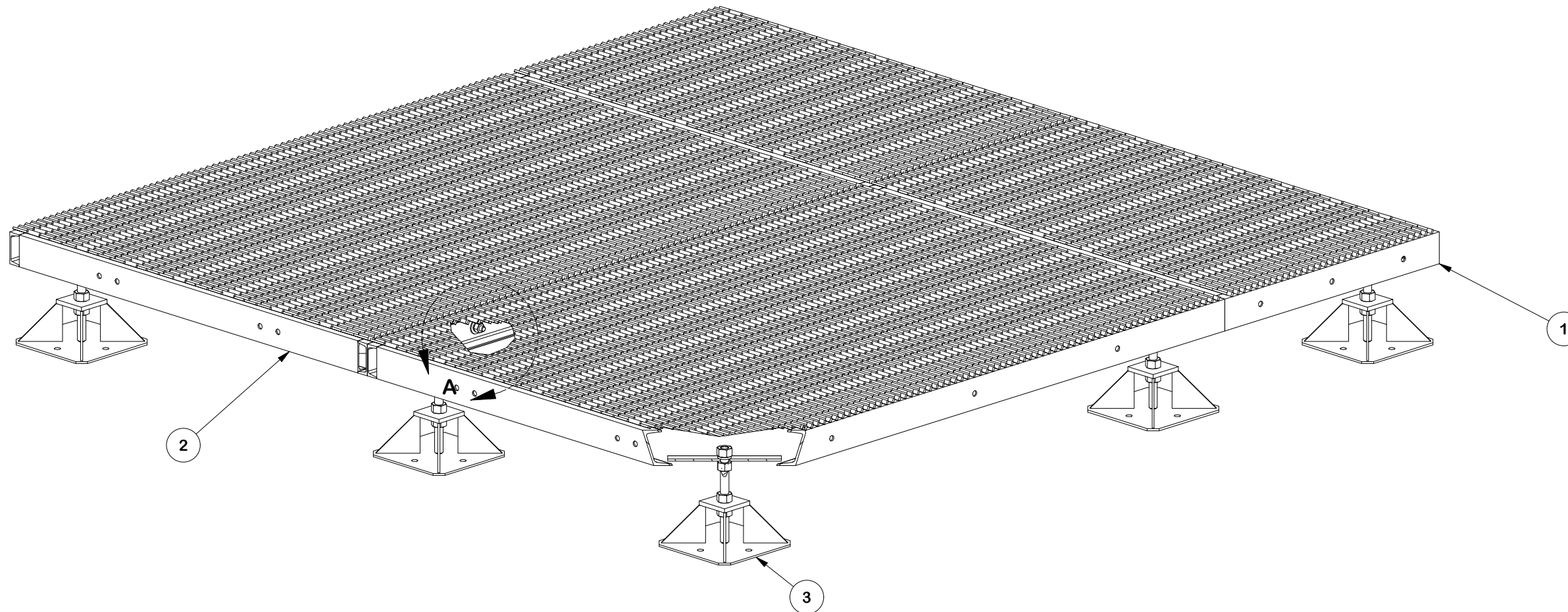


PARTS LIST						
ITEM	QTY	PART NO.	PART DESCRIPTION	LENGTH	UNIT WT.	NET WT.
1	2	X-MEP53	5' X 3' MODULAR EQUIPMENT RACK BASE		216.33	432.66
2	2	X-MEP57	5' X 7' MODULAR EQUIPMENT RACK BASE		397.29	794.58
3	9	MPAD-S	12" SQUARE FOOTPAD FOR MODULAR EQUIPMENT PLATFORM		22.24	200.20
4	8	G58134	5/8" x 1-3/4" HDG BOLT	1 3/4 in	0.27	2.15
5	8	G58FW	5/8" HDG USS FLATWASHER	1/8 in	0.07	0.56
6	8	G58LW	5/8" HDG LOCKWASHER		0.03	0.21
7	8	G58NUT	5/8" HDG HEAVY 2H HEX NUT		0.13	1.04
					TOTAL WT. #	1431.40



DETAIL A



TOLERANCE NOTES

TOLERANCES ON DIMENSIONS, UNLESS OTHERWISE NOTED ARE:
 SAWED, SHEARED AND GAS CUT EDGES ($\pm 0.030"$)
 DRILLED AND GAS CUT HOLES ($\pm 0.030"$) - NO CONING OF HOLES
 LASER CUT EDGES AND HOLES ($\pm 0.010"$) - NO CONING OF HOLES
 BENDS AND ANGLES ARE $\pm 1/2$ DEGREE
 ALL OTHER MACHINING ($\pm 0.030"$)
 ALL OTHER ASSEMBLY ($\pm 0.060"$)

PROPRIETARY NOTE:
 THE DATA AND TECHNIQUES CONTAINED IN THIS DRAWING ARE PROPRIETARY INFORMATION OF VALMONT INDUSTRIES AND CONSIDERED A TRADE SECRET. ANY USE OR DISCLOSURE WITHOUT THE CONSENT OF VALMONT INDUSTRIES IS STRICTLY PROHIBITED.

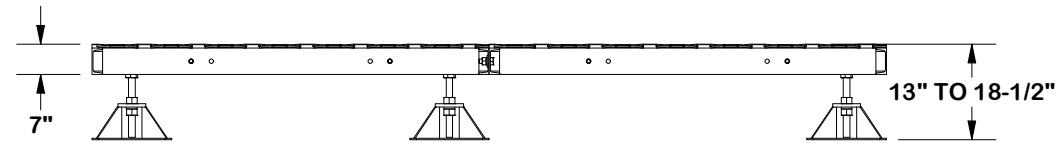
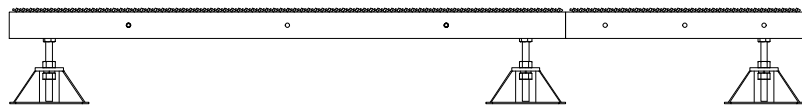
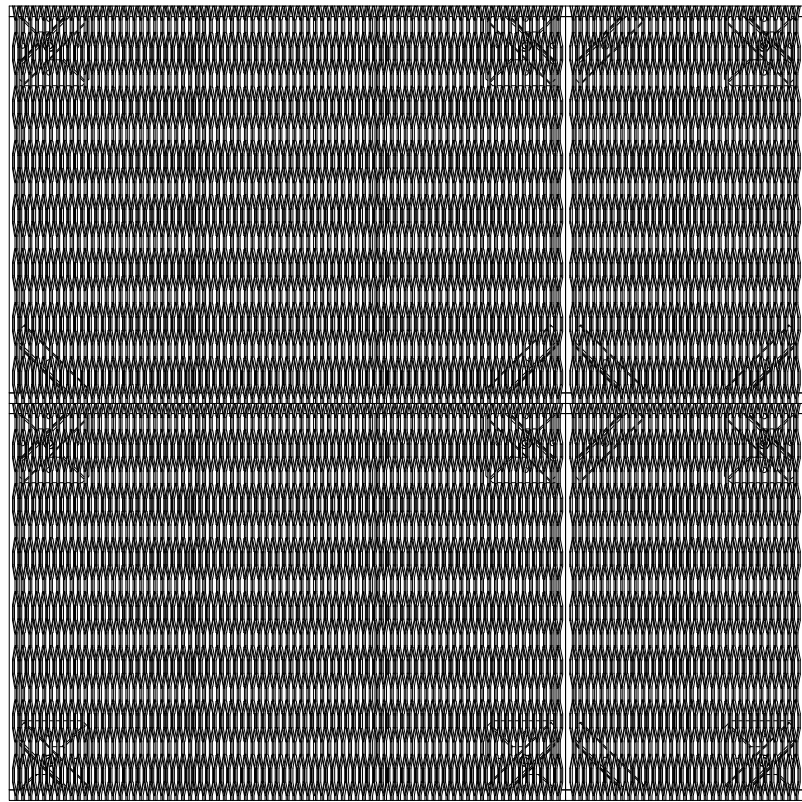
DESCRIPTION
10' X 10' MODULAR EQUIPMENT PLATFORM WITH SMALL FOOTPADS

SITE PRO 1
 A valmont COMPANY
 Engineering Support Team:
 1-888-753-7446

REV	DESCRIPTION OF REVISIONS	CPD	BY	DATE
A	REVISED TO SUPER ASSEMBLY	NCS	ADB	4/8/2025
REVISION HISTORY				

CPD NO. NCS	DRAWN BY CEK 3/23/2023	ENG. APPROVAL 4/9/2025
CLASS 87	SUB 02	DRAWING USAGE CUSTOMER
CHECKED BY CSL 4/9/2025		

PART NO. MEP1010-7S	1 OF 5 PAGE
DWG. NO. MEP1010-7S	



TOLERANCE NOTES

TOLERANCES ON DIMENSIONS, UNLESS OTHERWISE NOTED ARE:
 SAWED, SHEARED AND GAS CUT EDGES ($\pm 0.030''$)
 DRILLED AND GAS CUT HOLES ($\pm 0.030''$) - NO CONING OF HOLES
 LASER CUT EDGES AND HOLES ($\pm 0.010''$) - NO CONING OF HOLES
 BENDS AND ANGLES ARE $\pm 1/2$ DEGREE
 ALL OTHER MACHINING ($\pm 0.030''$)
 ALL OTHER ASSEMBLY ($\pm 0.060''$)

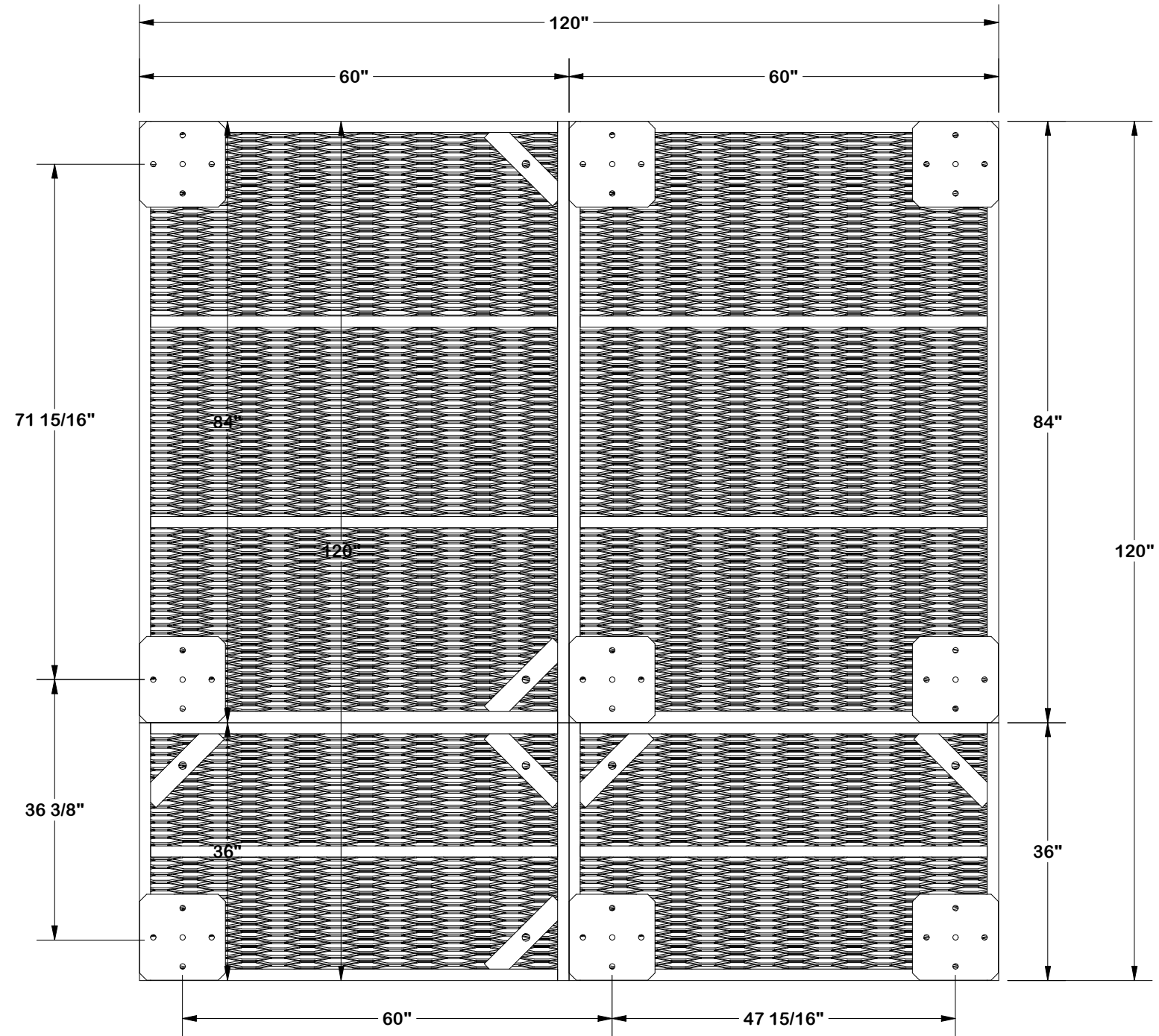
PROPRIETARY NOTE:
 THE DATA AND TECHNIQUES CONTAINED IN THIS DRAWING ARE PROPRIETARY INFORMATION OF VALMONT INDUSTRIES AND CONSIDERED A TRADE SECRET. ANY USE OR DISCLOSURE WITHOUT THE CONSENT OF VALMONT INDUSTRIES IS STRICTLY PROHIBITED.

DESCRIPTION
**10' X 10' MODULAR EQUIPMENT PLATFORM
 WITH SMALL FOOTPADS**

SITE PRO 1
 A valmont COMPANY
 Engineering Support Team:
 1-888-753-7446

CPD NO. NCS	DRAWN BY CEK 3/23/2023	ENG. APPROVAL 4/9/2025
CLASS 87	SUB 02	DRAWING USAGE CUSTOMER
CHECKED BY CSL 4/9/2025		

PART NO. MEP1010-7S
DWG. NO. MEP1010-7S



FOUNDATION VIEW

TOLERANCE NOTES

TOLERANCES ON DIMENSIONS, UNLESS OTHERWISE NOTED ARE:
 SAWED, SHEARED AND GAS CUT EDGES ($\pm 0.030"$)
 DRILLED AND GAS CUT HOLES ($\pm 0.030"$) - NO CONING OF HOLES
 LASER CUT EDGES AND HOLES ($\pm 0.010"$) - NO CONING OF HOLES
 BENDS AND ANGLES ARE $\pm 1/2$ DEGREE
 ALL OTHER MACHINING ($\pm 0.030"$)
 ALL OTHER ASSEMBLY ($\pm 0.060"$)

PROPRIETARY NOTE:
 THE DATA AND TECHNIQUES CONTAINED IN THIS DRAWING ARE PROPRIETARY INFORMATION OF VALMONT INDUSTRIES AND CONSIDERED A TRADE SECRET. ANY USE OR DISCLOSURE WITHOUT THE CONSENT OF VALMONT INDUSTRIES IS STRICTLY PROHIBITED.

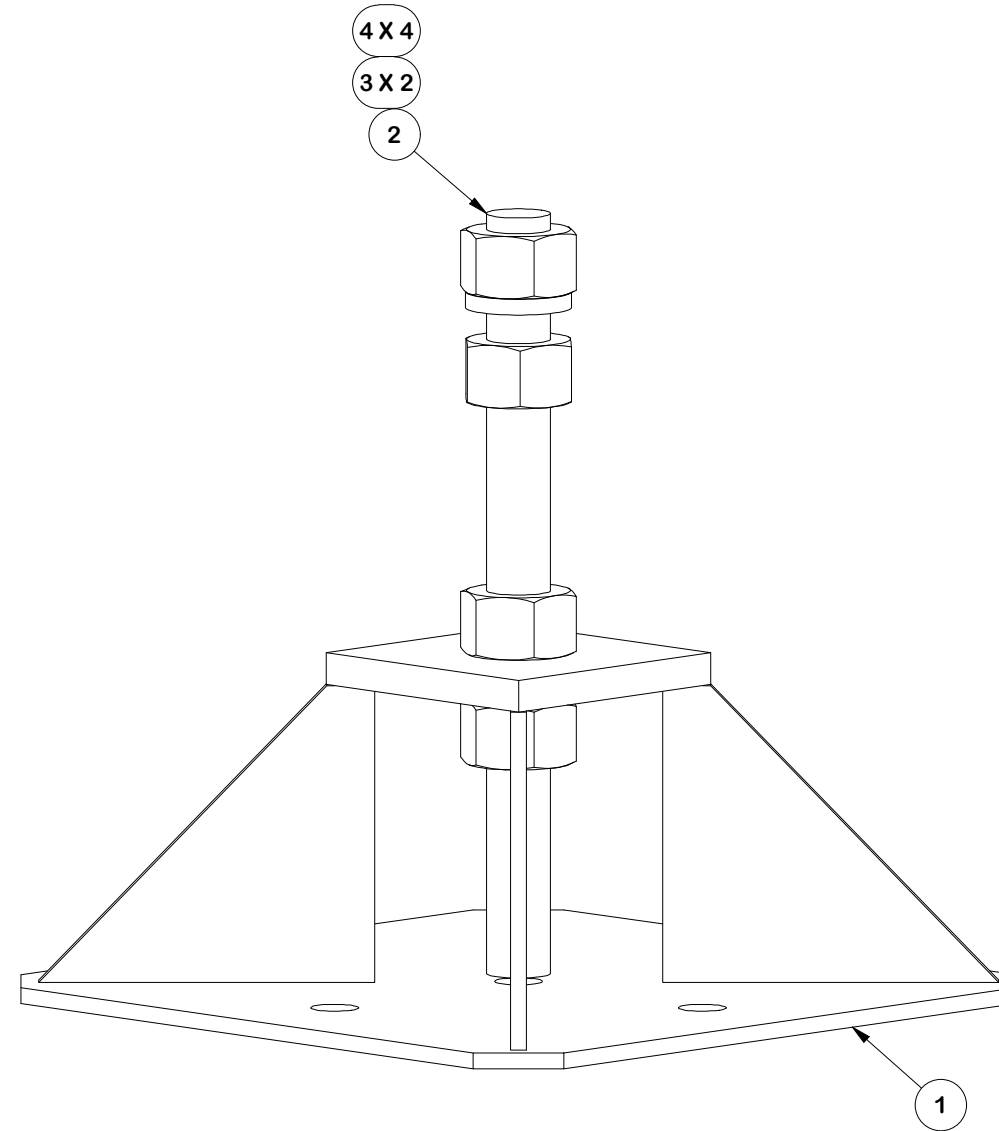
DESCRIPTION
**10' X 10' MODULAR EQUIPMENT PLATFORM
 WITH SMALL FOOTPADS**

SITE PRO 1
 A valmont COMPANY
 Engineering Support Team:
 1-888-753-7446

CPD NO. NCS	DRAWN BY CEK 3/23/2023	ENG. APPROVAL 4/9/2025
CLASS 87	SUB 02	DRAWING USAGE CUSTOMER
CHECKED BY CSL 4/9/2025		

PART NO. MEP1010-7S	PAGE 3 OF 5
DWG. NO. MEP1010-7S	

PARTS LIST						
ITEM	QTY	PART NO.	PART DESCRIPTION	LENGTH	UNIT WT.	NET WT.
1	1	X-MPADS	1' SQAURE MODULAR PLATFORM FOOTPAD		17.50	17.50
2	1	G1R-12	1" x 12" THREADED ROD (HDG.)	12 in	2.67	2.67
3	2	G1LW	1" LOCK WASHER		0.09	0.19
4	4	G1NUT	1" HDG HEAVY HEX NUT		0.47	1.88
					TOTAL WT. #	22.25



TOLERANCE NOTES

TOLERANCES ON DIMENSIONS, UNLESS OTHERWISE NOTED ARE:
 SAWED, SHEARED AND GAS CUT EDGES ($\pm 0.030"$)
 DRILLED AND GAS CUT HOLES ($\pm 0.030"$) - NO CONING OF HOLES
 LASER CUT EDGES AND HOLES ($\pm 0.010"$) - NO CONING OF HOLES
 BENDS ARE $\pm 1/2$ DEGREE
 ALL OTHER MACHINING ($\pm 0.030"$)
 ALL OTHER ASSEMBLY ($\pm 0.060"$)

PROPRIETARY NOTE:
 THE DATA AND TECHNIQUES CONTAINED IN THIS DRAWING ARE PROPRIETARY INFORMATION OF VALMONT INDUSTRIES AND CONSIDERED A TRADE SECRET. ANY USE OR DISCLOSURE WITHOUT THE CONSENT OF VALMONT INDUSTRIES IS STRICTLY PROHIBITED.

DESCRIPTION
10' X 10' MODULAR EQUIPMENT PLATFORM WITH SMALL FOOTPADS

CPD NO. NCS	DRAWN BY CEK 3/23/2023	ENG. APPROVAL 4/9/2025
CLASS 87	SUB 02	DRAWING USAGE CUSTOMER
	CHECKED BY CSL 4/9/2025	

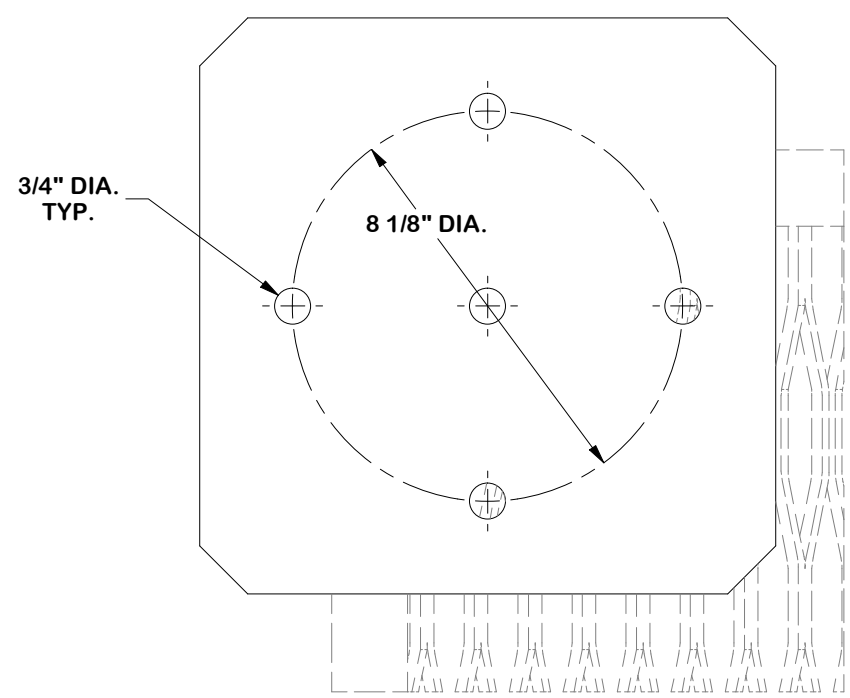
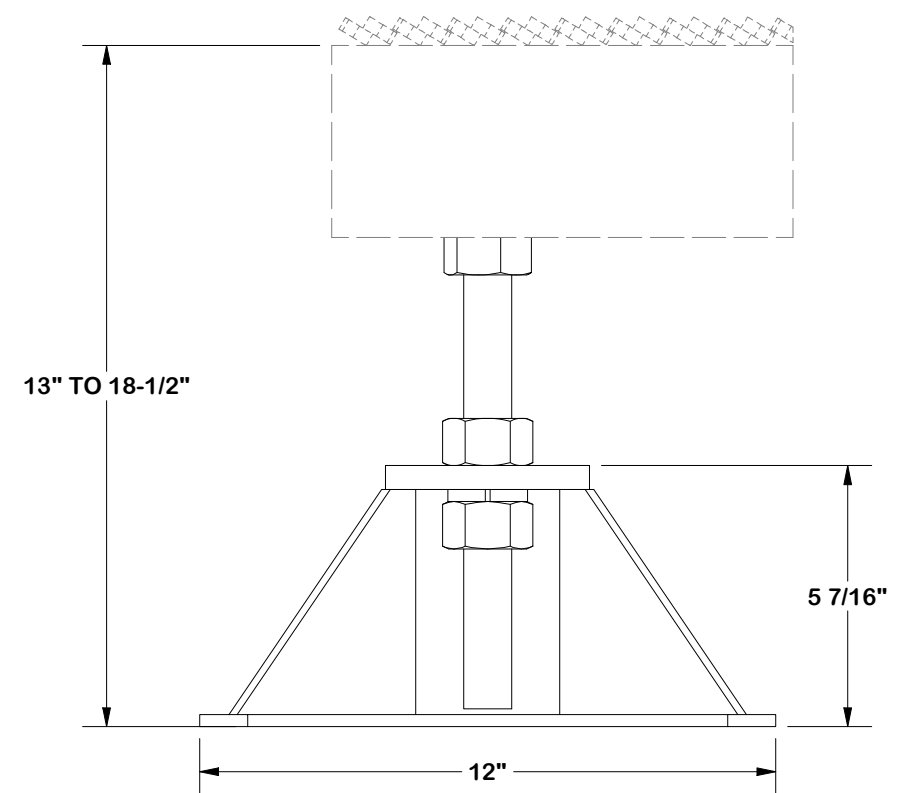


A **valmont** COMPANY

Locations:
 New York, NY
 Atlanta, GA
 Los Angeles, CA
 Plymouth, IN
 Salem, OR
 Dallas, TX

Engineering Support Team:
 1-888-753-7446

PART NO. MPAD-S	4 OF 5 PAGE
DWG. NO. MEP1010-7S	



TOLERANCE NOTES

TOLERANCES ON DIMENSIONS, UNLESS OTHERWISE NOTED ARE:
 SAWED, SHEARED AND GAS CUT EDGES (± 0.030 ")
 DRILLED AND GAS CUT HOLES (± 0.030 ") - NO CONING OF HOLES
 LASER CUT EDGES AND HOLES (± 0.010 ") - NO CONING OF HOLES
 BENDS ARE $\pm 1/2$ DEGREE
 ALL OTHER MACHINING (± 0.030 ")
 ALL OTHER ASSEMBLY (± 0.060 ")

PROPRIETARY NOTE:
 THE DATA AND TECHNIQUES CONTAINED IN THIS DRAWING ARE PROPRIETARY INFORMATION OF VALMONT INDUSTRIES AND CONSIDERED A TRADE SECRET. ANY USE OR DISCLOSURE WITHOUT THE CONSENT OF VALMONT INDUSTRIES IS STRICTLY PROHIBITED.

DESCRIPTION
10' X 10' MODULAR EQUIPMENT PLATFORM WITH SMALL FOOTPADS

CPD NO. NCS	DRAWN BY CEK 3/23/2023	ENG. APPROVAL 4/9/2025
CLASS 87	SUB 02	DRAWING USAGE CUSTOMER
		CHECKED BY CSL 4/9/2025



A **valmont** COMPANY

Locations:
 New York, NY
 Atlanta, GA
 Los Angeles, CA
 Plymouth, IN
 Salem, OR
 Dallas, TX

Engineering Support Team:
 1-888-753-7446

PART NO. MPAD-S
DWG. NO. MEP1010-7S